

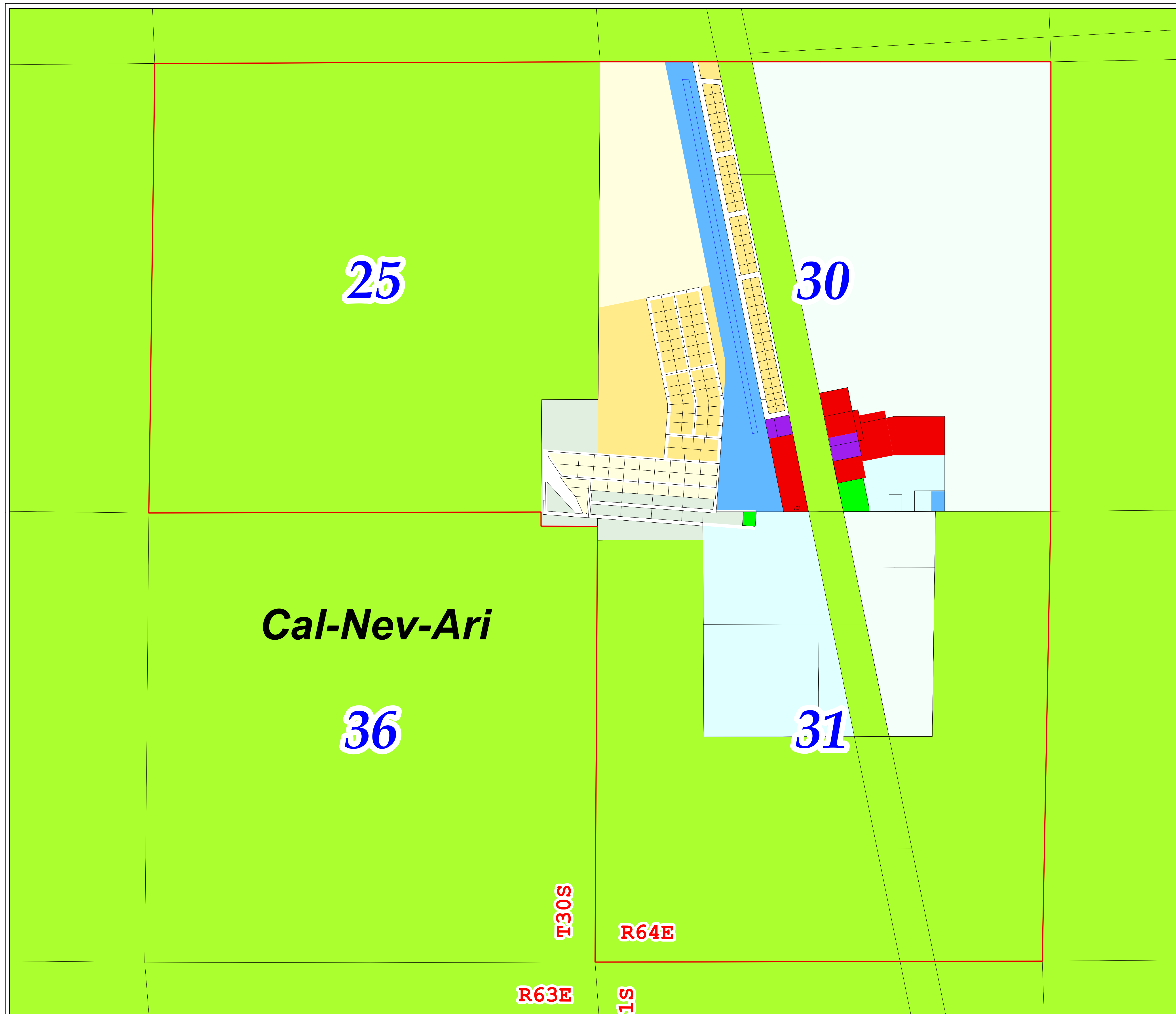
Comprehensive Planning

South County Planning Area

Planned Land Use

Cal-Nev-Ari Detail Area

Adopted June 19, 2013



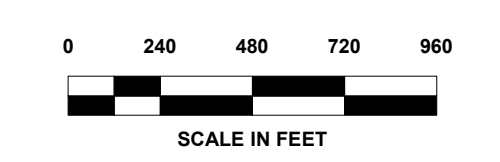
- | | |
|--|---|
| Open Lands | Residential High Rise Center
Greater than 32 du/1 ac |
| Residential Rural
Up to 0.5 du/1 ac | Office Professional |
| Residential Agricultural
Up to 1 du/1 ac | Commercial Neighborhood |
| Rural Neighborhood Preservation
Up to 2 du/1 ac | Commercial General |
| Rural Neighborhood
Up to 2 du/1 ac | Commercial Tourist |
| Residential Low
Up to 3.5 du/1 ac | Business and Design
Research Park |
| Residential Suburban
Up to 8 du/1 ac | Industrial |
| Residential Medium
Up to 3 du/1 ac to 14 du/1 ac | Heavy Industrial |
| Residential High
Up to 8 du/1 ac to 18 du/1 ac | Public Facilities |
| Residential Urban Center
Up to 18 du/1 ac to 32 du/1 ac | Institutional |
| Cooperative Management Area | Major Development Projects |
| Community Districts | Planning Area Boundary |
| Airport Arrival RPZ | Incorporated Cities
Tribal Lands |
| Airport Arrival and Departure RPZ | Noise Environs AE-60 |
| Airport Departure RPZ | Noise Environs AE-65 |
| Military Facilities | Noise Environs AE-70 |
| | Noise Environs AE-75 |

- | | |
|-------------------------|-----------------------------|
| CCSD = School District | L = Library |
| E = Elementary | P = Park |
| M = Middle | W = Place of Worship |
| H = High | SS = Electrical Sub-Station |
| G = Government Facility | PW = Public Works |
| GC = Golf Course | WD = Water District |
| F = Fire Station | U = Utility |

Maps are available for overall South County and these detail Areas:

Cal-Nev-Ari, Eldorado Valley, Goodsprings, Jean, Nelson, Palm Gardens, Primm, Sandy Valley, Searchlight, Sloan

For detailed Land Use information, see Adopted Land Use Plans.



This information is for display purposes only.
No liability is assumed as to the accuracy of the data delineated hereon.
Categories denoted in the legend may not apply to a particular Planning Area.

